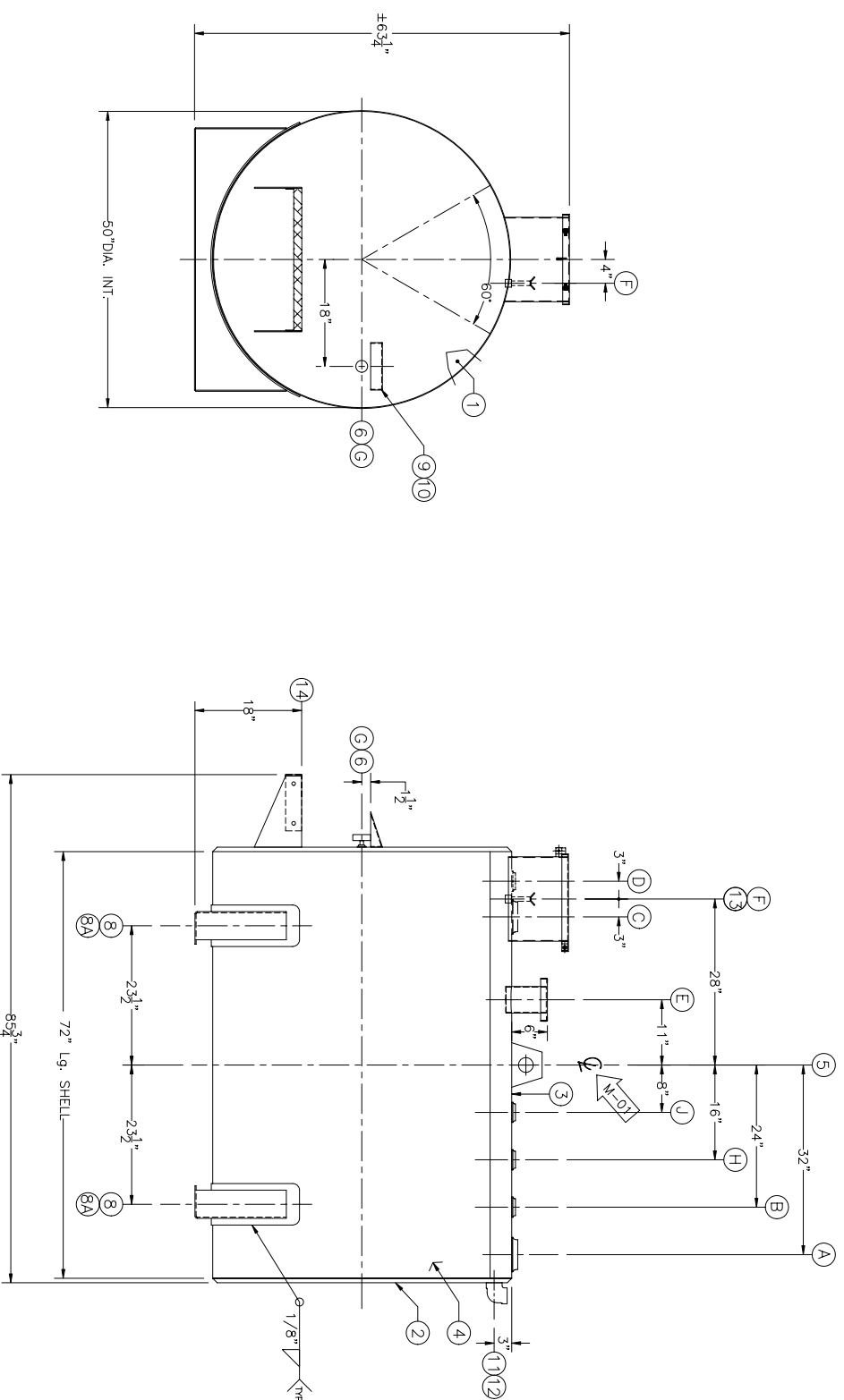


LIST OF OPENINGS

CHK#	NO/QTY	DIA.	TYPE	CL.	MAT.	PIE#	PIE	SCH.	NOTE
	A	1	4"	W.T.F.	SA105	-	-	-	-
	B	1	2"	W.T.F.	SA-105	-	-	-	-
	C	1	4"	W.T.F.	SA-105	-	-	-	FILL
	D	1	2"	W.T.F.	SA-105	-	-	-	MANUAL
	E	1	4"	EMERGENCY VENT	AS587/44W	-	-	-	EMERGENCY VENT
	F	1	3/4"	HAFT COUPLING	SA105	-	-	-	HAFT COUPLING
	G	1	1/4"	W.T.F.	SA105	-	-	-	W.T.F.
	H	1	2"	W.T.F.	SA-105	-	-	-	W.T.F.
	J	1	2"	W.T.F.	SA-105	-	-	-	W.T.F.

LIST OF MATERIAL

CHK#	ITEM/QTY	DESCRIPTION	MAT.	NOTE
	1	2 HEAD 5070D X (2.5mm) THK	A5-589 2mm	
	2	HEAD 50 9/16"OD. X (2.5mm) THK	A5-589 2mm	
	3	1 PLATE (2.5mm) THK	C40-21-44W	
	4	1 PLATE (2.5mm) THK	C40-21-44W	
	5	1 LIFTING LUG	C40-21-44W	
	6	1 VACUUM KIT	COPPER	
	7	2 SPOULDS	A5-589 2mm	
	8	2 WARE PLATE 1/4" X 7" X 587G	A5-589 2mm	
	9	1 WAREPLATE "ULC" S-601-DLK	C40D0558	
	10	1 WAREPLATE BRACKET	C40-21-44W	
	11	1 INTERSTICE ELBOW 2" 90°	SA-234-W79	
	12	1 INTERSTICE PLUG 2" 90°	URETHANE	
	13	1 WELDED SPILLOX 14" X 14"	C40-21-44W	
	14	2 PLATE 3/16"THK. X 8" X 12"	C40-21-44W	
	15	1 STEP DIAMOND GRIP* 24 WIDE	C40-21-44W	
	16	1 DIP STICK	WOOD	
	17	1 VOLUIMETRIC CHART		



GENERAL NOTES

BUILT AS PER "ULC" S601 LAST EDITION
AIR TESTED: 4.3 PSIG (30 KPa) min.
5.0 PSIG (35 KPa) max.
INSIDE COATING: NONE
OUTSIDE COATING: SPC-SP6 + WHITE EPOXY PAINT
MAJOR POINT(S)
* : ITEM SHIPPED LOOSE
EMERGENCY VENT CAPACITY: 85 m ³ /min.
REAL CAPACITY: 520 LG. / 2365 LITERS / 625 US.G.
APPROX. SHIPPING WEIGHT: 1126 LBS / 512 Kg



GILFAB-ASI Inc.
 625, Boulevard Industriel
 Mascouche (Quebec) J7K 3G6
 Tel.: (450) 474-7400
 Fax: (450) 474-7404

TITLE:
 (1) ABOVEGROUND TANK 500 I.G.
 300" DOUBLE WALL

JOB No.:	---	DRAWN BY:	JEAN LEPAGE
SCALE:	NONE	REVISED BY:	J.L.
DATE:	22/09/05	APPROVED BY:	J.L.
PROJECT:		DRAWING NO.:	601-DW-500-RO
		REV.:	0