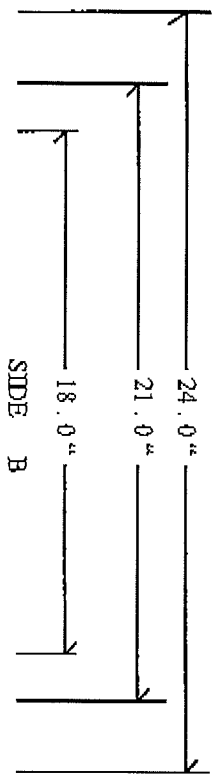
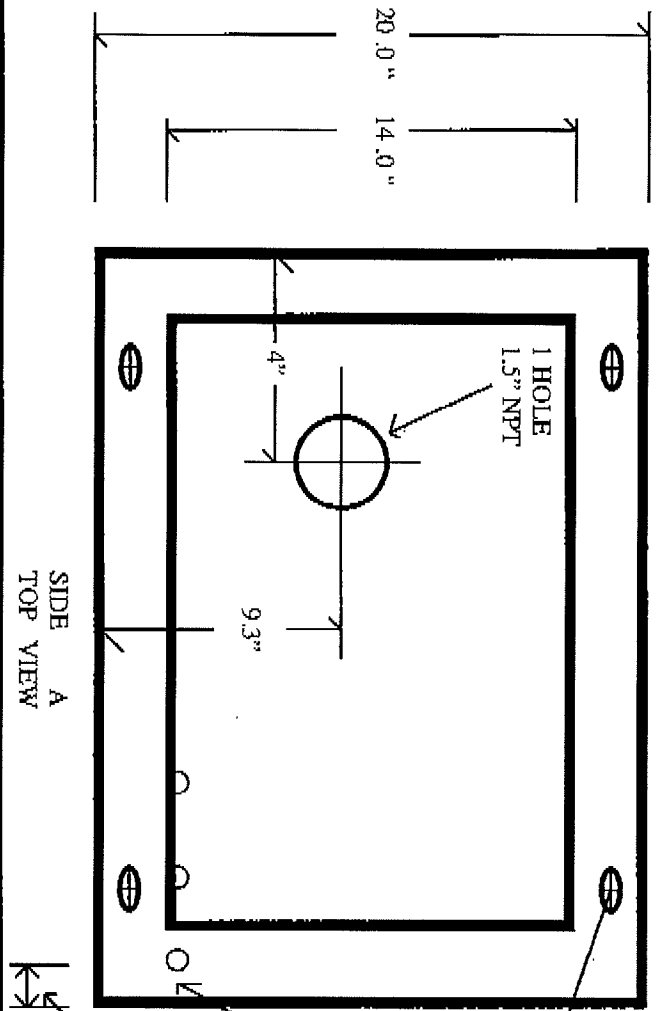


FOOT PRINT



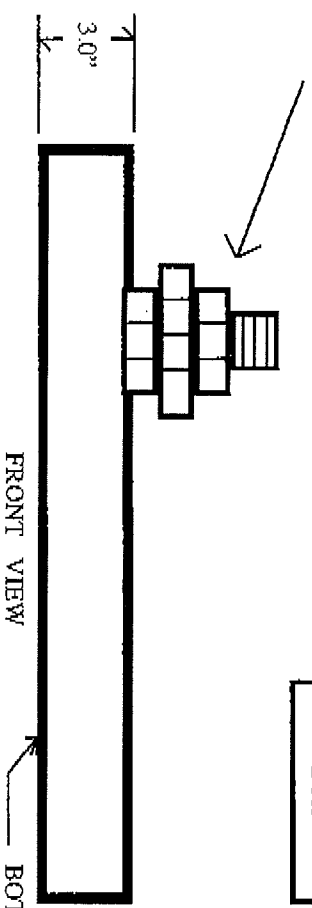
PAN USED
DP-1120



JUNCTION BOX INLET
@ 3.375" OC
FOR SATELLITE
CENTER INLET ONLY

SIDE A
TOP VIEW

INLET CONNECTION 1.5" NPT



FRONT VIEW



JUNCTION
BOX

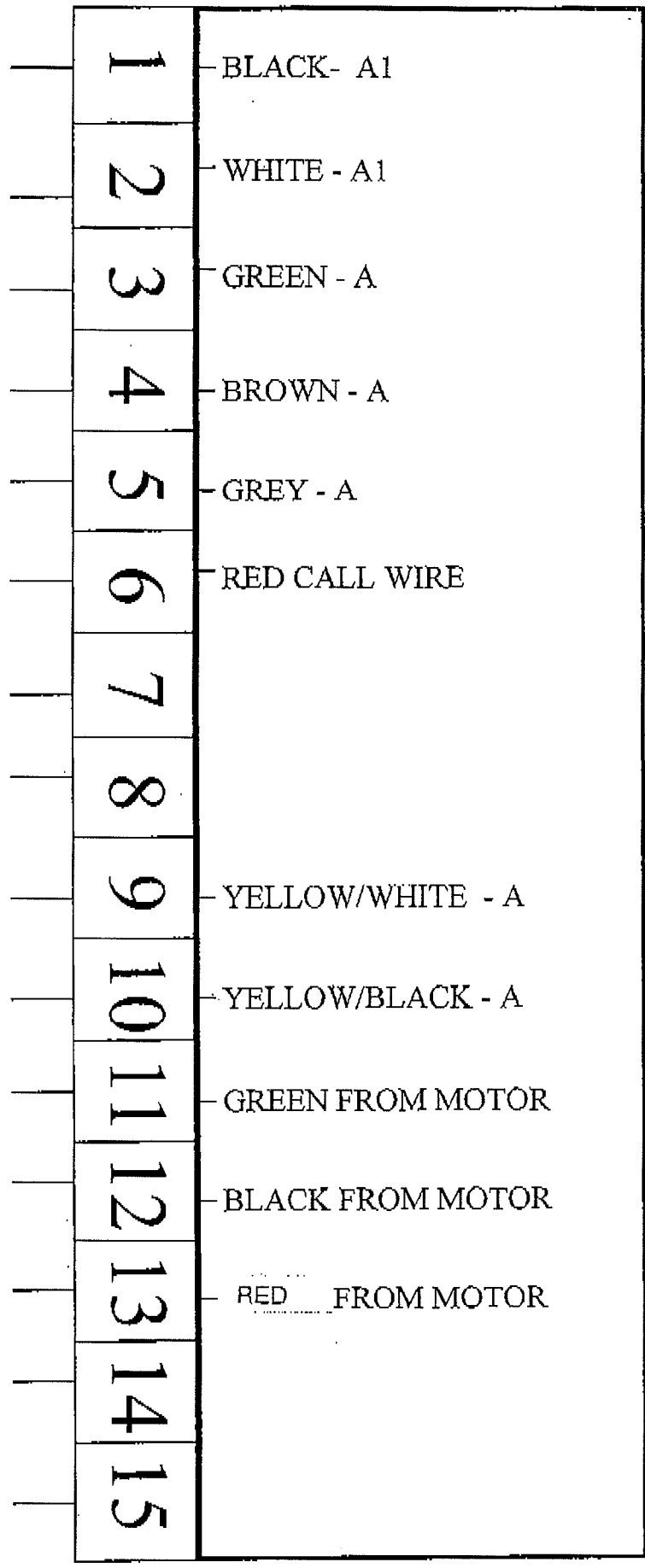
18.50"

BOTTOM OF BASE

MODEL # S-11S / S-12S / SC-11S / SC-12S / SCM-12S
WITH (GPU) PUMP

JAN 2010
FLK

DEER DISPENSING INC. WIRING DIAGRAM



120 VAC HEAD POWER
 NEUTRAL
 GROUND
 120 VAC LIGHTS
 120 VAC RELAY POWER
 COMPUTROL INPUT

RECEIVE A
 (PIN 3 12V COMPUTROL)
 COMMON
 (PIN 2 PULSE COMPUTROL)

220VAC 10AMP L1
 (FROM COMPUTROL RELAY)
 220VAC L2

MOTOR
 POWER MUST
 BE ON A
 SEPARATE
 PHASE THAN
 HEAD POWER

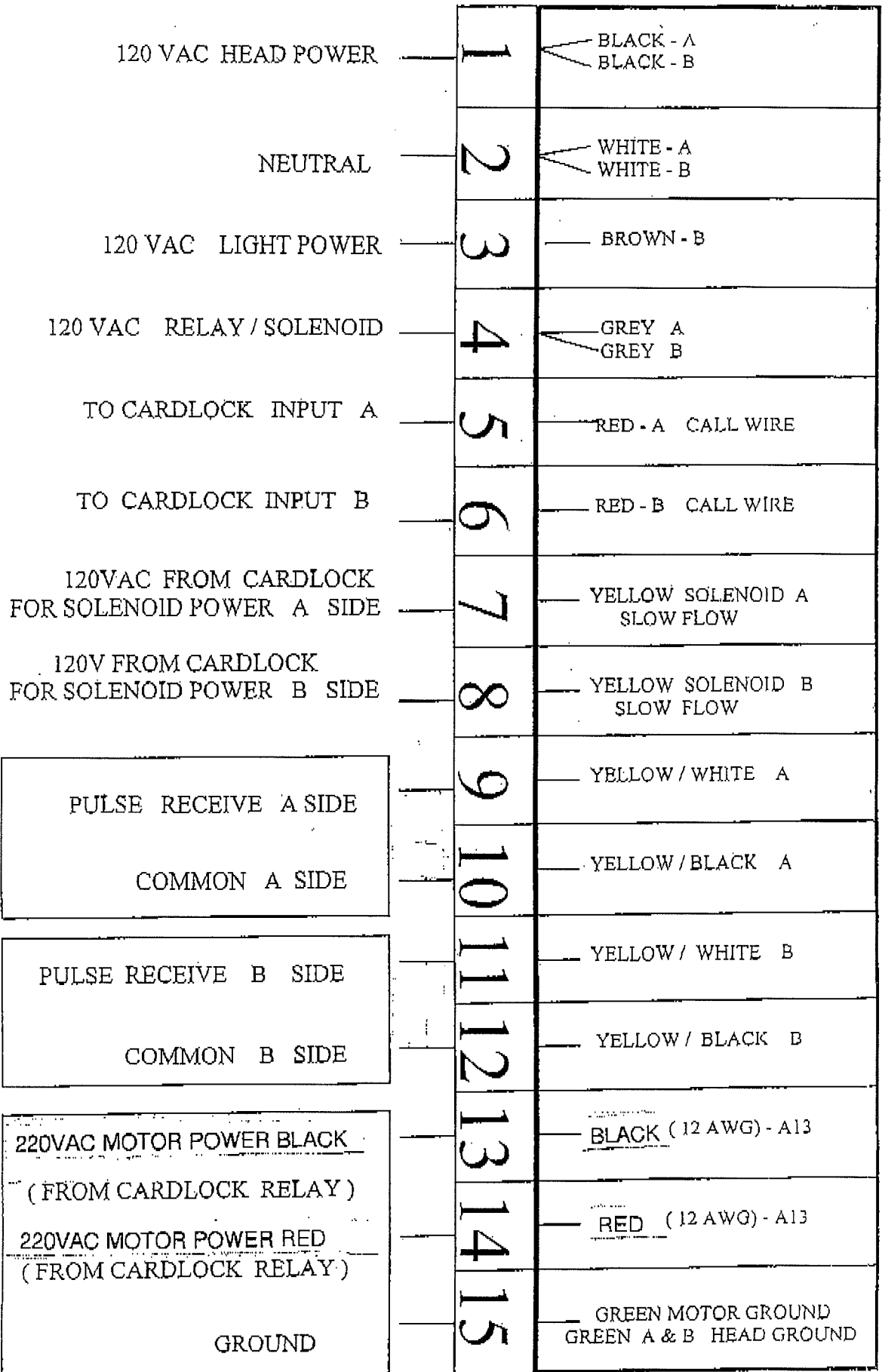
NOTE: HEAD CIRCUIT MUST BE SEPERATED FROM ALL OTHER CIRCUITS

MODEL # S-SC-115 SINGLE SUCTION CONNECTED TO COMPUTROL 4/06 EV

FIELD CONNECTION

FACTORY CONNECTIONS

DEER DISPENSING INC. WIRING DIAGRAM



NOTE: HEAD CIRCUIT MUST BE SEPARATED FROM ALL OTHER CIRCUITS (MOTOR POWER MUST BE ON A SEPARATE PHASE FROM HEAD)

220 VAC

MODEL # S-SC-12S DUAL 1 SUCTION TO CARDLOCK
(FOR PETROVEND INSTALL 470ohm ACROSS 9 & 10 / 11 & 12
7/04 EV