

since 1906  
**albany**  
pump company ltd.

**ALBANY FUEL TRANSFER PUMP + STRAINER SETS**

since 1906  
**albany**  
PUMP COMPANY LTD.

Made in Canada  
Fabrique en Canada

[www.albanypump.com](http://www.albanypump.com)

Albany Pump AF Series Fuel Oil Filtration and Polishing Systems are self-contained, pre-packaged and pre-wired units specifically designed to purify and filter stored diesel fuel. Preserving the integrity of the diesel fuel helps ensure trouble-free generator starts and reduces annual maintenance, contaminated fuel disposal and annual reservoir cleaning costs.

Maintaining clean and dry diesel fuel also discourages the growth of algae and bacteria while helping to reduce the need for expensive chemicals and biocide additives. Albany Pump AF Series Fuel Oil Filtration and Polishing Systems are fully automated with tank monitoring capabilities and are capable of servicing multiple tanks.

At the heart of each system is a diesel fuel purifier that is a simple one step unit. It removes nearly 100% of the free water and up to 98% of Particulate (to 2 microns). Even today's "clean" diesel fuel becomes contaminated all too easily. Water enters fuels systems through vents, leaks, and sometimes with the delivered fuel. Micro organisms can grow in fuel, especially in the presence of moisture.

### **Each System Includes:**

- Albany 'L' or 'G' Series Positive Displacement Gear Pump with adjustable internal relief valve and totally enclosed fan cooled industrial motor. Shut-off valves and flanges are positioned so the pump may be removed for servicing without disturbing piping.
- Weather proof NEMA 4X rated enclosure, with lockable door, rupture containment basin with leak detection sensor and 1/2" NPT plug drain port. Enclosure can be ordered for either wall mounting or with optional base for pad or tank top mounting.
- Common system suction port and common system discharge port with "lost" flow detection sensor.
- System inlet strainer with liquid filled compound vacuum pressure gauge and differential pressure gauge for "clean" strainer alarm indication.
- Check valve and liquid filled pressure gauges on each pump discharge.
- UL/ULC listed control panel, containing programmable logic controller, adjustable system timer, manual-off-auto illuminated pump mode selector switch, indicating lights, alarms and motor starter with overload protection.

### **Filtration Stages:**

#### **Stage One: Separation**

As fuel enters the filter assembly, it moves through the centrifuge and spins off large solids and water droplets which fall to the bottom of the collection bowl.

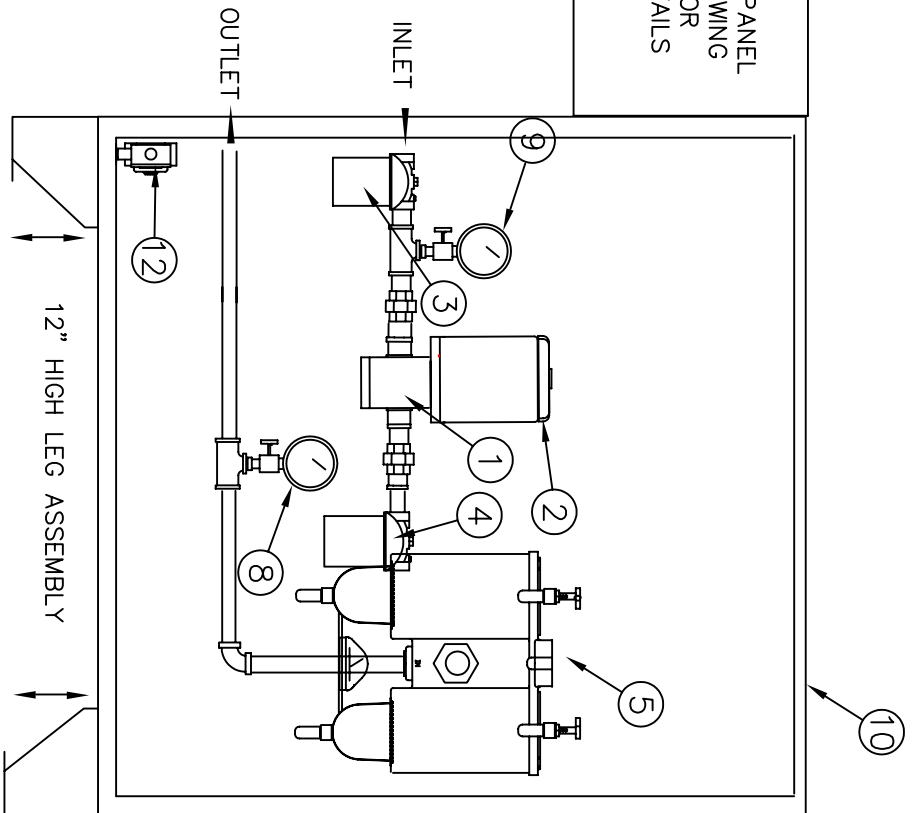
#### **Stage Two: Coalescing**

Small water droplets bead-up on the surface of the conical baffle and cartridge element. When heavy enough, they too fall to the bottom of the bowl.

#### **Stage Three: Filtration**

Proprietary Aquabloc®II cartridge elements repel water and remove contaminants from fuel down to 2 micron (nominal). They are waterproof and effective longer than water absorbing elements.

SEE PANEL  
DRAWING  
FOR  
DETAILS



NO.	DESCRIPTION	MFG	QUAN.
1	FUEL OIL PUMP MODEL 05LC6131C	ALBANY	1
2	1/2HP 115/230V 1PH 60HZ 1750RPM TEFC MOTOR	LEESON	1
3	SIMPLEX BASKET STRAINER C/W 60 MESH S.S. SCREEN	ALBANY	1
4	FUEL FILTER - 10 MICRON	GENERAL	1
5	TURBINE SERIES FILTER / WATER SEPARATOR 2 MICRONS (DUPLEX)	RACOR	1
7	1/2" NPT PIPING (SCH. 40)		1
8	PRESSURE GAUGE 4" DIA. 0-60PSI	ALBANY	1
9	COMPOUND GAUGE 4" DIA. 30"-0-30 PSI	ALBANY	1
10	ASSEMBLY ENCLOSURE 36" X 48" X 12" DEEP.		1
11	AUTOMATIC CONTROL PANEL		1
12	BASIN LEAK DETECTOR SWITCH	KTECH	1

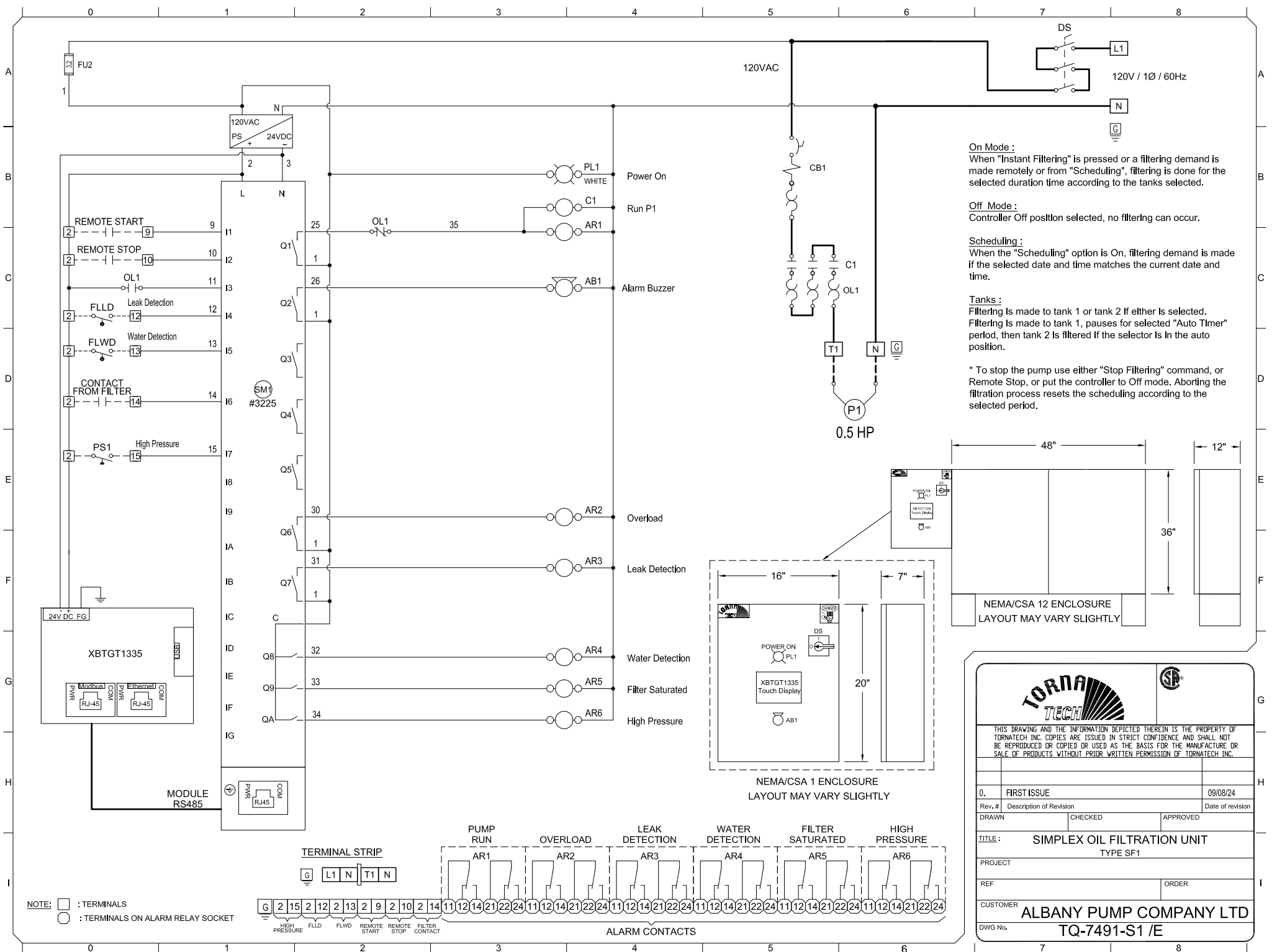
LIQUID DIESEL FUEL OIL  
PRESSURE 15 PSI  
CAPACITY 6 USGPM  
SUCTION 18 FT. MAX.

**ALBANY PUMP CO. LTD.**  
420 HARRY WALKER PARKWAY  
NEWMARKET, ONT. CANADA L3Y 8P5

DRWN. DAK  
DATE --/--  
SCALE NONE

FUEL OIL FILTRATION UNIT

CHK'D DRWG# AF-L05



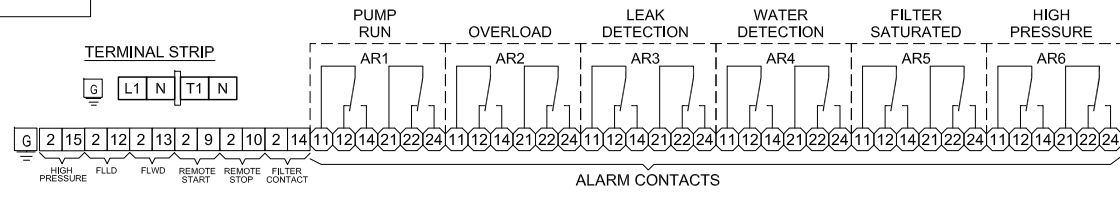
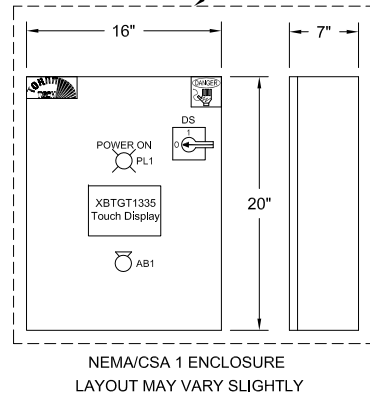
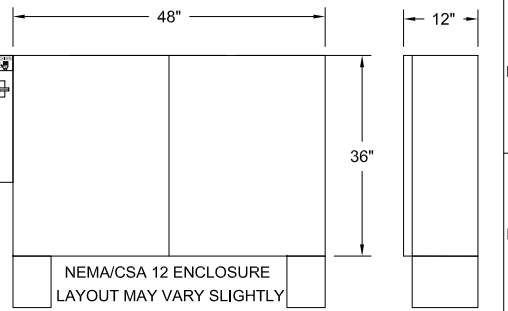
**On Mode :**  
When "Instant Filtering" is pressed or a filtering demand is made remotely or from "Scheduling", filtering is done for the selected duration time according to the tanks selected.

**Off Mode :**  
Controller Off position selected, no filtering can occur.

**Scheduling :**  
When the "Scheduling" option is On, filtering demand is made if the selected date and time matches the current date and time.

**Tanks :**  
Filtering is made to tank 1 or tank 2 if either is selected. Filtering is made to tank 1, pauses for selected "Auto Timer" period, then tank 2 is filtered if the selector is in the auto position.

\* To stop the pump use either "Stop Filtering" command, or Remote Stop, or put the controller to Off mode. Aborting the filtration process resets the scheduling according to the selected period.



NOTE: □ : TERMINALS  
○ : TERMINALS ON ALARM RELAY SOCKET

THIS DRAWING AND THE INFORMATION DEPICTED THEREIN IS THE PROPERTY OF TORNATECH INC. COPIES ARE ISSUED IN STRICT CONFIDENCE AND SHALL NOT BE REPRODUCED OR COPIED OR USED AS THE BASIS FOR THE MANUFACTURE OR SALE OF PRODUCTS WITHOUT PRIOR WRITTEN PERMISSION OF TORNATECH INC.

0.	FIRST ISSUE	09/08/24
Rev. #	Description of Revision	Date of revision
DRAWN	CHECKED	APPROVED

TITLE: **SIMPLEX OIL FILTRATION UNIT**  
TYPE SF1

PROJECT: \_\_\_\_\_

REF: \_\_\_\_\_ ORDER: \_\_\_\_\_

CUSTOMER: **ALBANY PUMP COMPANY LTD**

DWG No. **TQ-7491-S1 / E**

Model #	G.P.H.	H.P.	Connection Size
AF-L93	120	1/3	3/8"
AF-L86	210	1/2	3/8"
AF-L05	360	3/4	1/2"
AF-L94	600	1	1/2"

NOTE: For Larger G.P.H. Consult Factory.

The Albany Fuel Oil Filtration Assembly is designed to circulate and clean fuel stored diesel fuel at critical facilities. Fuel Oil Filtration and Polishing has become an important aspect of emergency power reliability: Many critical facilities store increasing amounts of fuel onsite to assure continuity of operation and this fuel has low turnover in operation.

- as diesel fuel ages, particulates form which can increase the wear on generator engine parts
- fuel storage tanks accumulate water through vapor condensation and this water can encourage bacterial growth
- newer diesel engines with improved emissions technology require higher purity fuel to prolong engine life.

The Albany Fuel Oil Filtration Assembly has an innovative compact design has a minimal footprint for Filtration / Polishing of tanks from 500 to 50,000 gallon capacity

The mechanical design is based on our own Albany Pumps and Racor filters and is complete with strainers, check valves, ball valves, pressure / vacuum gauges, relief valves. The unit is mounted on an integral containment with leak detection monitoring.

The Filtration Assembly includes a motor starter panel, with disconnect switch, Automatic operation and monitoring with HOA switches and an emergency stop.