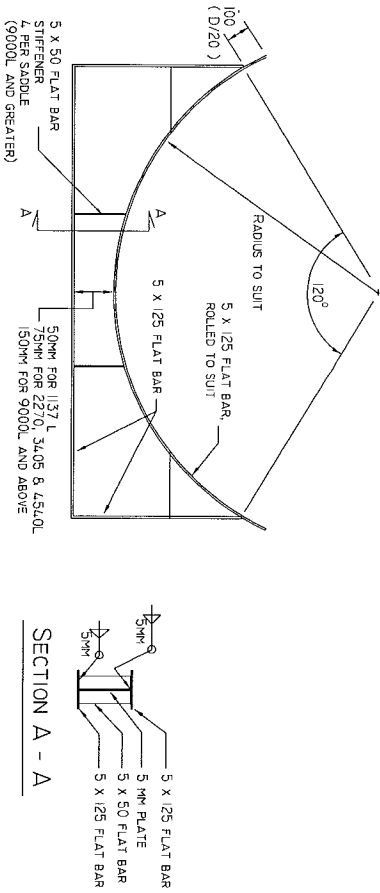


ELEVATION - 750 GAL TANK
NTS



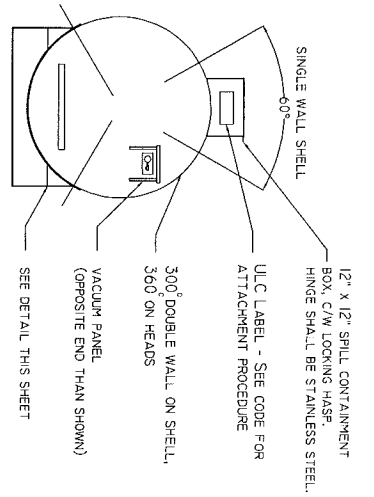
TANK SADDLE DETAIL
NTS

NON-UNIFORM SPECIFICATION SERIES - CAPACITIES AND DIMENSIONS

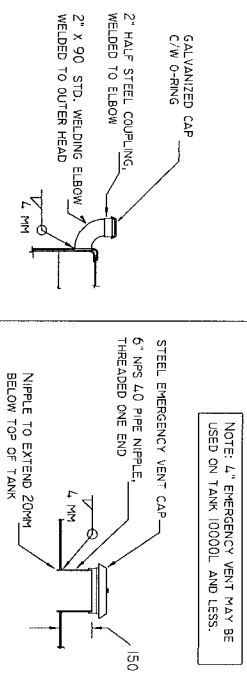
SIZE	DIAMETER	LENGTH	HEAD/SHELL THICKNESS		SHELL THICKNESS		INTERSTITIAL VENTS
			PRIMARY TANK	SECONDARY TANK	SECONDARY TANK	SECONDARY TANK	
LITRES	MM	INCHES	MM	INCHES	MM	INCHES	NO. (REQ'D. SIZES)
GALES	MM	INCHES	MM	INCHES	MM	INCHES	
1137	250	38	1520	60	125	3.0	1
2270	500	1300	71	3.0	125	3.0	1-1/2
3405	750	1500	50	2667	105	3.0	1-1/2
4540	1000	1500	50	3420	134	3.0	1-1/2
9000	2000	2000	79	2865	113	4.0	2
13600	3000	2000	79	4209	171	4.0	2
18100	4000	2000	79	5761	227	4.0	2
22700	5000	2000	79	7226	285	4.0	2

NOTES:

- THIS DRAWING IS TO BE READ IN CONJUNCTION WITH U.L.C.-S601-93 STANDARD FOR SHOP FABRICATED STEEL ABOVEGROUND HORIZONTAL TANKS. AMENDED JUNE 1995. HEREAFTER REFERRED TO AS THE CODE.
- ALL WELDING SHALL BE PERFORMED BY QUALIFIED PERSONNEL, HOLDING A VALID CERTIFICATE ISSUED BY THE N.S. DEPARTMENT OF LABOUR.
- TANKS 10000L AND LARGER SHALL HAVE INTERNAL SEAL WELDING AS PER SECTION 3.6 AND 3.7 OF THE CODE.
- FLANGE DEPTH SHALL BE (6 X HEAD THICKNESS) OR 25MM, WHICHEVER IS GREATER. TANKS UP TO 1300MM DIAMETER MAY HAVE FLANGE DEPTH OF 10MM MINIMUM.
- TANK CONNECTIONS AS PER DESIGN NO. 8.1 OF THE CODE (WELD-IN FITTING)
- LIFTING LUGS SHALL BE DESIGNED AS PER SECTION 3.4 OF THE CODE.
- ON TANKS REQUIRING INTERNAL SEAL WELDING, INSTALL ACCESS OPENING AS PER APPENDIX C OF THE CODE.

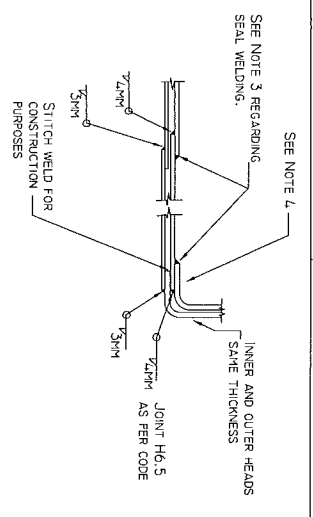


TANK PROFILE
NTS



DETAIL 1
NTS

DETAIL 2
NTS



DETAIL 4
NTS

DATE	NO.	REVISION	BY	SCALE	PROJECT	DRAWING NO.	SHEET NO.
				NTS	DOUBLE-WALL STEEL TANK	U.L.C.-S601-93 STANDARD	1
				NTS	750 GALLON		
				06/03	ELEVATION, PROFILE & CONSTRUCTION DETAILS		
				APPROVED			
					A.F.L. TANK MANUFACTURING	ARCHAT, NOVA SCOTIA	