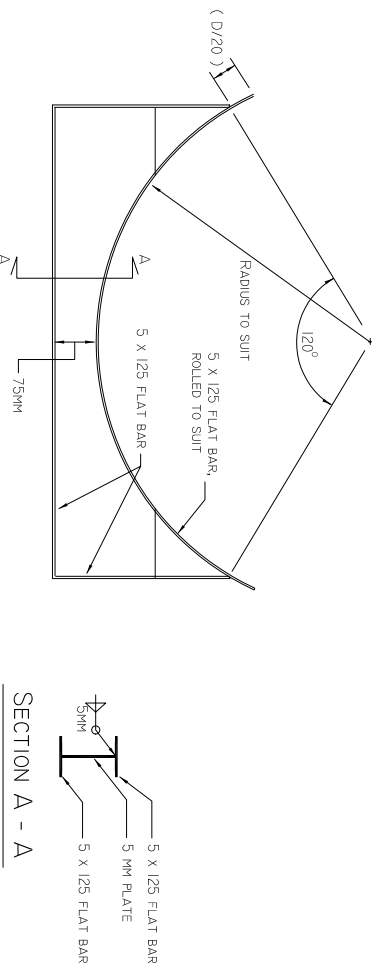


ELEVATION - 250 GAL TANK

NTS



TANK SADDLE DETAIL

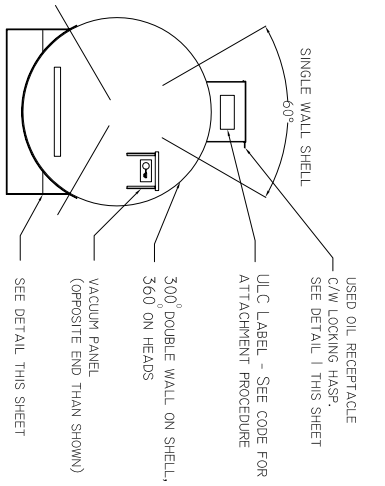
NTS

NON-UNIFORM SPECIFICATION SERIES - CAPACITIES AND DIMENSIONS

SIZE	DIAMETER		LENGTH		HEAD/SHELL THICKNESS		HEAD THICKNESS		SHELL THICKNESS		INTERSTITIAL VENTS
	LITRES	GALS.	MM	INCHES	MM	INCHES	MM	INCHES	MM	INCHES	
1137	250	965	38	1.50	60	3.0	.125	3.0	.125	3.0	1
2270	500	1930	50	19.00	71	3.0	.125	3.0	.125	3.0	1
3405	750	1300	50	26.67	105	3.0	.125	3.0	.125	3.0	1
4540	1000	1300	50	34.20	134	3.0	.125	3.0	.125	3.0	1
9000	2000	2000	79	28.65	113	4.0	.1575	4.0	.1575	4.0	2
13600	3000	2000	79	43.29	171	4.0	.1575	4.0	.1575	4.0	2
18100	4000	2000	79	57.61	227	4.0	.1575	4.0	.1575	4.0	2
22700	5000	2000	79	72.26	285	4.0	.1575	4.0	.1575	4.0	2

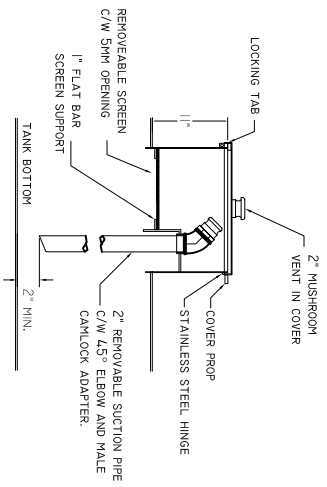
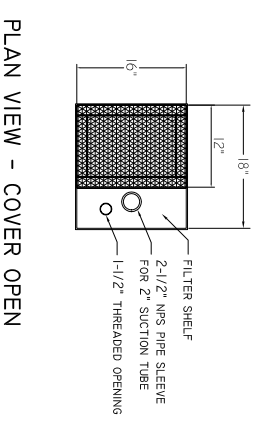
NOTES:

1. THIS DRAWING IS TO BE READ IN CONJUNCTION WITH U.L.C.-S652-93 STANDARD FOR TANK ASSEMBLIES FOR COLLECTION OF USED OIL, AMENDED JUNE, 1995, HEREAFTER REFERRED TO AS THE CODE.
2. ALL WELDING SHALL BE PERFORMED BY QUALIFIED PERSONNEL, HOLDING A VALID CERTIFICATE ISSUED BY THE N.S. DEPARTMENT OF LABOUR.
3. FOR CONSTRUCTION DETAILS OF ACTUAL TANK SHELL, REFER TO AFL U.L.C.-S601 DRAWINGS.
4. TANK SHALL BE INSTALLED AND MAINTAINED IN ACCORDANCE WITH THE CODE. SEE AFL LITERATURE.
5. TANK CONNECTIONS AS PER DESIGN NO. 8.1 OF THE S601 CODE (WELD-IN FITTINGS).
6. LIFTING LUGS SHALL BE DESIGNED AS PER SECTION 3.4 OF THE S601 CODE.
7. TANK SHALL HAVE WARNING SYMBOLS AND LABELS AS PER THE CODE.



TANK PROFILE

NTS



DETAIL I - USED OIL RECEPTACLE

NTS

DATE	NO.	REVISION	BY		A.F.L. TANK MANUFACTURING ARICHAH, NOVA SCOTIA	SCALE NTS	DRAWN BY GL/D/T	DATE 04/06	APPROVED	DRAWING 04/06	PROJECT DOUBLE-WALL STEEL TANK	SHEET NO. 1	DRAWING NO. AFL-W250
ELEVATION, PROFILE & CONSTRUCTION DETAILS													